



The FORE!

February 2011 Volume 22 Issue 2 Page 1 of 4 Your Riverbend Ladies Golf Association newsletter, chartered since 1989 with reserved Wed., Sat. and Sun. morning tee times for our members. To be guaranteed a weekend tee time, you need to call the Pro Shop 253 854 3673 by Wednesday; for a Wednesday tee time, call the desk and put your name on the list by Tuesday.

For membership information and much more go to <http://www.rlga.org/>

2011 RLGA Board

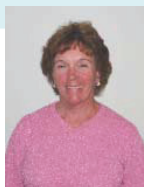
Your Appointed Board Members

Captain's Corner

Welcome to the 2011 golf season. The year started off wet and cold but if the weather keeps improving like it has the past few days we are going to have a great year for golf. The first tournament of the year, February 19th, is a Combined Score Tournament. If you do not have a partner the tournament committee will pair you with another RLGA member. This is a great opportunity to meet and play with someone you may have seen at the course but do not personally know.

Many of us put our clubs away during the fall and winter months. I would like to suggest that now is a great time to pull them out, dust them off and take them for a ride to the Riverbend Driving Range. Winter and spring is an excellent time to work on your game. To help you get ready for the coming season, Josh, Eric and Jon would be more than happy to enroll you in a private lesson or as a member of a group lesson. Now is also a great time to work on your golf fitness. Increasing your flexibility and strength may be exactly what is needed to improve your game.

All RLGA members are invited to attend the Board meetings which are held on the first Tuesday of each month. Hope to see you all there. Cathy

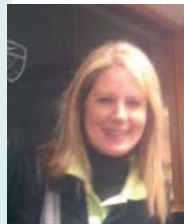


Player Recognition
Peggy Haugan



Membership Chairman
June Secret

Tournament Director
Judy Griffin



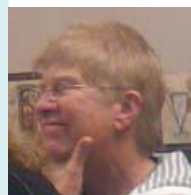
Team Captain
Kathy Provazek



Rules/Bylaws
Anne Tuttle

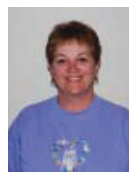


Co Tournament Director
Kris Immordino



GSWPGA, TWGA
WSPGLA Rep

Social & Historical



Handicap Chair
Jerri Proszak



PNGA Representative
Lynne Crandall



Newsletter Editor
Mary Ryan



Webmaster
Elana Bryan

Your Elected Officers



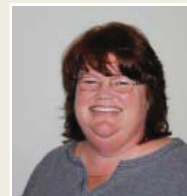
Captain
Cathy Rosa



Co -Captain
Angela Hobbs



Treasurer
Teresa Le



Secretary
Mary Powers

Riverbend Golf Complex **Winter 2010-2011 Events** Schedule. (Women will likely play from the red tees and be inserted into a flight based on handicap).
 To enter these events go to <http://riverbendgolfcomplex.com> or pick up entry form at driving range or proshop or call the proshop at 253-854-3673 (golf)
 Sat Feb 12, 2011 \$65 8:30 Shotgun Stroke Play Deadline 2/10

2011 Schedule Riverbend Ladies Golf Association

February 19	Saturday	TBD
March 19	Saturday	Spring Fling
April 9,	Saturday	2 person Best Ball
May 22	Sunday	Red, White & Blue
June 18	Saturday	Invitational
July 24	Sunday	Riverbend Cup (1 day this year)
August 6, 7	Sat & Sunday	Club Championship
September 10	Saturday	Chapman
November 6	Sunday	Big Break

(WSGA) Washington State Golf Association 2011

Winter Series

Competition	Date	Location
2 Person Scramble	February 18	Oakbrook G&CC
Stroke Play	March 11	Fairwood Golf & CC
2 Person Best Ball	April 8	Wine Valley Golf Club

Championship Schedule

Event	Date	Location
Women's Best Ball,	May 23 -24	Location TBD
Member Club Team,	June 1 - 2	Suncadia Resort
Women's & Senior Women's Am.	June 21 - 23	The Home Course
Parent-Child Championship	July 22	Riverbend
Mid-Amateur	August 10 - 11	Loomis Trail Golf Club

GSWPGA 2011Schedule: Handicap Limit 40. To enter these events see entry forms in Pro shop and/or contact Chery Lede 202-948-6798 bais1949@gmail.com These dates are firm but be alert for changes in the final schedule out in Feb. or March.

Date	Day of Week	Location	Competition
April 4	Monday	Jackson	Better Nine
May 12	Thursday	Twin Rivers	President's Charity
June 9	Thursday	Riverbend	Pro Am
July 14	Thursday	Auburn	Sweeps plus Champion of Champions
Aug 8-9-10	M-T-W	Mount Si	City Championship
Sept. 8	Thursday	Jefferson	2 Lady Best Ball
Oct 13	Thursday	SnoqualmieFalls	Eccy 9

WSWPLA 2011 Schedule Handicap Limit 40. To enter these events see entry forms in Pro shop and/or contact Chery Lede 202-948-6798 bais1949@gmail.com Tentative schedule for WSWPLA 2011

Month	Date	Location	Course
March	5	Spring Meeting	Sea Tac Community Center
April	16	Bellingham	North Bellingham
May	16,17	Richland/Yakima	Horn Rapids or Apple Tree
June	15	Orting	High Cedars
July	11,12,13	Port Ludlow	Port Ludlow
August	22	Dupont	Home Course
Sept.	15,16	Moses Lake	Leavenworth/Kahler Glen/Moses Lake
October	15	Port Orchard	McCormick Woods
Nov.	5th	Fall Luncheon	TBD

Your **RLGA** membership entitles you to play in events sponsored by :

State: WSWPLA Washington State Women's Public Links Assn. <http://www.wswpla.com>

City: GSWPGA Greater Seattle Women's Public Golf Assn. <http://www.gswpga.com>

TWGA Tacoma Women's Golf Assn. <http://www.twga.org>

PNGA Pacific Northwest Golf Assn. <http://www.thepnga.org>

WSGA Washington State Golf Assn. <http://www.thewsga.org>

To enter **USGA** events you need to join the United States Golf Assn. (\$25.00) <http://www.usga.org/>

To enter **AGA** Advertising Golf Association events email agagolfer@yahoo.com or call: (206) 226 5332.

RLGA State & City and TWGA rep Sheryl Lede bais1949@gmail.com 1141 S 243rd Court Des Moines, WA 98198 206-212-6525 206-948-6798

Tacoma Womens Golf Association TWGA 2011 Schedule: Handicap Limit 40. To enter these events contact Chery Lede 202-948-6798 bais1949@gmail.com We won't receive these dates until February 2011.

(PNGA) Pacific Northwest Golf Association 2011 Schedule. To enter these events go website shown above or call 206-526-1238 These 2011 dates will be shown once they are on the PNGA website.

2011 AGA Golf Itinerary

April 4 Mon	TPC at Snoqualmie Ridge	\$87 - PGA Champions tour site. #4 in WA. With cart. *
April 21 Thu	Rainier CC	\$65 - Excellent Seattle private club. (1921)
May 2 Mon	Inglewood GC	\$65 - Difficult Kenmore layout. (1919)
May 12 Thu	Oakbrook CC	\$40 - Superb Drainage. A Lakewood jewel.
May 23 Mon	Bear Creek CC	\$65 - Great value. #13 in WA. With cart & dinner. *
June 9 Thu	Tacoma G & CC	\$60 - Historic exclusive Tacoma venue. (1894)
June 27 Mon	Fairwood G & CC	\$55 - Outstanding private Renton course. (RSVP dinner to follow.)
July 7 Thu	The Home Course	\$37 - Sr. \$43 Reg. Top WSGA owned track.
July 14 Thu	Salish Cliffs	New Gene Bates / Couples Thurston county course.
July 14-20	Part of 6 day series of top area courses. Open to all golfers. See NGT site.	
July 18 Mon	Olympia CC	\$45 - Beautiful, tree lined setting. (1926) (with dinner)
Aug 9 Tue	Canterwood CC	\$65 - Superior Gig Harbor track. #5 in WA.
Aug 25 Thu	Mill Creek CC	\$65 - Lush Snohomish County private club.
Sep 8 Thu	Tumble Creek CC	\$93 - Scenic, very difficult private club. With lunch. *
Sep 19 Mon	Glendale CC	\$65 - WA State Open site. Exclusive venue.
Oct 3 Mon	Fircrest CC	\$50 - Highly Rated private Tacoma CC. (1923)
Oct 10 Mon	Chambers Bay	\$79 - Future site of US Open - Robert Trent Jones.

For tee times: email agagolfer@yahoo.com or Phone (206) 226 5332.

AGA office: 3540 Stone Way Seattle WA 98103 (Noon times) regular updates are sent to you.

Special AGA Rates: taxes, carts, dinners not usually included -
(AGA \$5) + Optional Tournament @ ea. event.

2011 TWGA Schedule (Tentative)

Monday, April 18, 2011	JV with WWTP	Hawk's Prairie
Monday, May 02, 2011		North Shore
Monday, June 06, 2011		Meadow Park
Monday, July 11, 2011	2Lady Best Ball	The Home Course
Mon-Tues August 1,2, 2011	Championship	Whispering Firs
Monday, September 12, 2011		Capitol City
Monday, October 03, 2011		Brookdale

Your RLGA Board has recommended the following pairing procedures for our designated tee times:

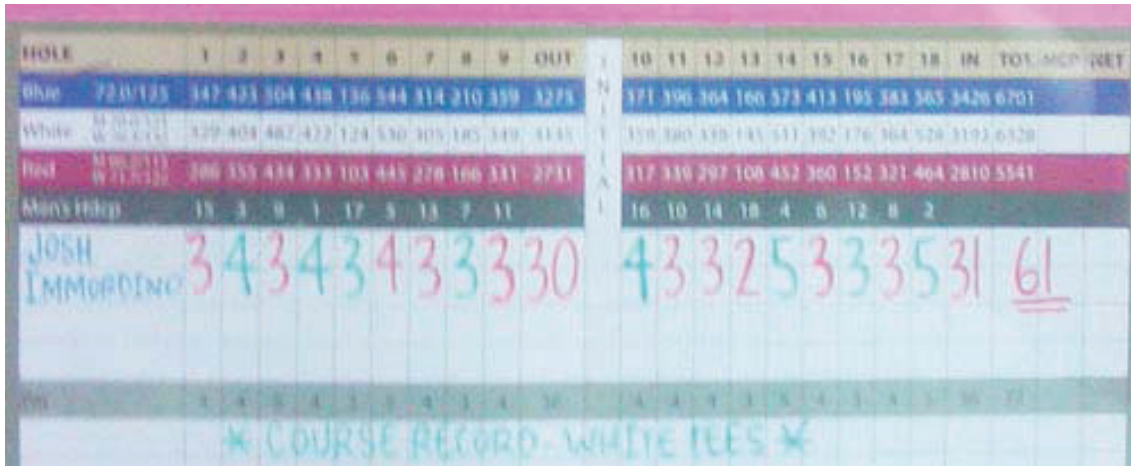
In order to "mix-up" the groups, and enable all members to get to know the other members, we will meet by the first tee and either draw numbers, flip a tee, etc to set up the groups. Then we are ready to play golf. If for some reason a group wants to play together, that group needs to move themselves to the last group.

The Seattle Golf & Travel Show Feb. 11-13, 2011

FREE ROUND of golf at one of four great courses when you join our e-club: 2011 courses: Eaglemont, Port Ludlow, Highlander & The Classic
You get a year's subscription to Golf Digest Magazine
You get a Washington State golf course directory FREE at the show
That is a \$60 Value - all for the \$12 ticket price.

Qwest Field Event Center Parking: Parking is available at the Qwest Field Event Center garage for \$10, or you may purchase parking online for the Safeco Field garage for \$5. The golf show will have a shuttle from the parking area. <http://www.seattlegolfshow.com>

Your newsletter editor hasn't yet located a source for a discounted ticket senior or otherwise. If anyone sees one, let me know at marypatryan@comcast.net. Last year I bought my ticket on line and avoided waiting in the ticket line. A couple years ago someone told me they took metro bus to Qwest Field, avoided gas costs AND parking.



This scorecard is posted in the breezeway. On August 11th, 2010, our Josh Immordino broke the white tee box course record at Riverbend with 61. Wow!

The February 2011 issue of Inside Golf, the free tabloid available in a rack next to the driving range door has a full page Riverbend ad where some course changes are highlighted.

There are three coupons.

Josh says these will go FAST.

Expires Feb 28 Pay for 9 holes, play 18;
Mon - Friday after 10 AM

Expires Feb 28 Buy 1 small bucket get 1 FREE
8:00 AM to 11:00 AM

Off-Season Lesson Special, Four Lessons for \$135
(\$180 value- see coupon for restrictions)

1. New Junior rates at the par 3 and the 18 hole course
2. New active military rates
3. New Range Ball rates for seniors and Active Military Mon-Fri \$4.00 small bucket
4. New junior small bucket rate \$2.00. Limit one per child per day.

The FORE!

RLGA
P O Box 1091
Kent, WA 98035-1091

What should you do if you post the wrong score?
E-mail Handicap chairman, Jerri Proszek and she will fix it! chandje@comcast.net

Important Dates

February 11, 12, 13 Golf Show
February 19 RLGA 1st 2011 event

2011 Bi-Weekly Competition Schedule for RLGA

April 16 - 30	T&F	Total Scores on holes that begin with a "T"Or "F", (Holes 2, 3, 5,10,12,13,14 & 15) , Minus 1/2 handicap.
May 1-15	Odd Holes	Add score on odd numbered holes, minus 1/2 your handicap.
May16-31	Criss Cross	Add best score of holes 1 &10, 2 &11, 3 &12, 4 &13,5 &14, 6 &15, 7 &16, 8 &17, 9 &18. Then minus 1/2 handicap.
June 1-15	Mutt &Jeff	Total for all par 3's &par 5's, minus 1/2 your handicap
June 16 - 30	9 Best Par 4's	Total score for 9 par 4's &minus 1/2 Your handicap
July 1-15	9 Easiest Holes	Total score for holes with a handicap Rating of 10 - 18. (Holes 1,5,7,9,10,11, 12,13 &16) minus 1/2 your handicap.
July 16 - 31 9	Worst Holes	Total of 2 par 5's, 2 par 3's &5 par 4's On which you had the highest score, Minus 1/2 your handicap.
August 1-15	Amen Corner	Total score on holes #6 thru #14, minus 1/2 your handicap.
-		
August 16 - 31	9 Hardest Holes	Total score for holes with handicap rating Of 1 to 9, (2,3,4,6,8,14,15,17 &18), minus 1/2 your handicap.
September 1-15	9 Best Holes	Total score for 2 par 5's, 2 par 3's &5 par 4's with your lowest scores, then minus 1/2your handicap.
Sept16 - 30	Modified Stableford	Score 6 points for an Eagle, 4 points for a Birdie, 2 points for a Par, 1 point for a Bogey and 0 points for Other. Total Points then minus 1/2 your handicap.

February 2011

Sunday	Monday	Tuesday	Wednesday	Thursday	Friday	Saturday
Notes:		1 RLGA Membership Meeting 6PM Par 3 Clubhouse	2 RLGA Tee Times 9:30	3	4	5 RLGA Tee Times 9:30
6 RLGA Tee Times 9:30	7	8	9 RLGA Tee Times 9:30	10	11 Seattle Golf Show	12 Seattle Golf Show NO RLGA Tee Times
13 Seattle Golf Show RLGA Tee Times 9:30	14	15	16 RLGA Tee Times 9:30	17	18 WSGA Winter Series Event, Oakbrook G & CC; 2 Person Scramble	19 RLGA Event
20 RLGA Tee Times 9:30	21	22	23 RLGA Tee Times 9:30	24	25	26 RLGA Tee Times 12:27 PM
27 RLGA Tee Times 9:30	28	Seattle Golf Show HOURS: Friday, Feb. 11 NOON - 6 PM Sat., Feb. 12 10 AM - 5 PM Sun., Feb. 13 10 AM - 4 PM			Feb 12th Riverbend Golf Complex Event 8:30 Shotgun, Stroke Play Signup deadline 2/10. Women can enter this event. Call the proshop.	

March 2011

Sunday	Monday	Tuesday	Wednesday	Thursday	Friday	Saturday
Notes:	March 1 First Day to Post	1 RLGA Board Membership Meeting 6PM Par 3 Clubhouse	2 RLGA Tee Times 8:33	3	4	5 WSWPLA Spring Meeting, Sea Tac Comm Center. RLGA Tee Times 8:33 AM
6 RLGA Tee Times 8:33 AM	7	8	9 RLGA Tee Times 8:33 AM	10	11 WSGA Winter Series: Fairwood G&CC Stroke Play	12 RLGA Tee Times 8:33 AM
13 Daylight Savings Time Spring Ahead; Fall Back RLGA Tee Times 8:33 AM	14	15 Ghin Revision Date	16 RLGA Tee Times 8:33 AM	17	18	19 RLGA Event Spring Fling
20 RLGA Tee Times 8:33 AM	21 Sign up deadline for WSWPLA April 16th event at Capital City	22	23 RLGA Tee Times 8:33	24	25	26 RLGA Tee Times 1:03 PM
27 RLGA Tee Times 8:33 AM	28	29	30 RLGA Tee Times 8:33	31	Notes:	



Combined Score Tournament

Saturday, February 19, 2011 9:00 AM

- ✿ This is a team event but players play their own ball. Players record their score for each hole. At the end, total both scores divide by 2 then subtract the team handicap that will be provided. This will determine your Team Net Score.
- ✿ Payouts for this tournament will be on Net Scores only.
- ✿ If you don't have a playing partner sign up anyway. We'll pair you with someone.
- ✿ Last year's closing handicaps will be used.

TEE TIME NOTIFICATION:

EMAIL NOTIFICATION TO CLUB MEMBERS, POSTED ON THE RLGA WEBSITE (WWW.RLGA.ORG) AND WILL BE AVAILABLE AT THE RIVERBEND PRO SHOP 253-833-8463 EXT 1 AFTER 4:00 PM ON THURSDAY PRIOR TO THE EVENT.

Questions?

Contact Judy @ jgriffin@masterhalco.com or Kris @kimmor1@comcast.net

Entry Deadline: Saturday, February 12th

Your entry fee is non-refundable if you cancel after February 17th

Combined Score Tournament

Saturday, February 19, 2010 – 9:00 AM

Entry fee is \$13 (This does **NOT** include Greens Fees)

Pay your greens fees the day of the tournament.

Member Name:	Contact Info (phone or email)
Handicap:	
Member Name:	Contact info (phone or email)
Handicap:	

Drop in RLGA box at the Pro Shop or mail to:

Riverbend Ladies' Golf Association
P.O. Box 1091
Kent, WA 98035

Riverbend Ladies Golf Association (RLGA) is not responsible or liable for injuries, loss or damage incurred or caused during any RLGA event. Your entry into an RLGA sponsored event is disclaimer that you hold RLGA harmless for any injury, loss or damage that may occur.