



# The FORE!

January 2010 Vol 22 Issue 1 Page 1 of 4 Your Riverbend Ladies Golf Association newsletter, chartered since 1989 with reserved Wed., Sat. and Sun. morning tee times for our members. To be guaranteed a weekend tee time, you need to call the Pro Shop 253 854 3673 by Wednesday; for a Wednesday tee time, call the desk and put your name on the list by Tuesday.

For membership information and much more go to <http://www.rlga.org/>

## Captain's Footnotes:

Phyllis Ellermeier, your captain.

First of all your RLGA Board of Directors would like to thank every one of you who took the time from your busy holiday schedule to attend our FIRST ANNUAL RLGA members Holiday Party held this past December at the Three Par Clubhouse. I know everyone had a terrific time, we even held our scheduled board meeting, and those members attending represented deciding votes for our proposed changes to our By-laws. (See earlier FORE editions for the details)

Now, coming this month is a very good time for all of us to renew our memberships, consider how we will celebrate our fabulous golf benefits at Riverbend, and our opportunities to grow our club through these uncommon benefits of membership. The RLGA Board will be pondering all possibilities for marketing our club, considering all sorts of strategies and potential efforts to encourage women golfers everywhere in Western Washington to recognize that our \$60.00 membership fee truly is "the best buy" in women's golf.

Mary Ryan, former Co-captain and intrepid FORE publisher is seeking all RLGA members special golf moments such as interesting locations you are golfing during these winter months, incredible shots from strange or difficult lies, and your personal stories about golf experiences unlike anyone else. And do I have a story to kick this off.....

After a pleasant round of golf not too long ago, I returned to my car dropped off my clubs, and took the dog for a short walk in order to return to the clubhouse to have a quick bite to eat and a beverage. A few minutes turned into a bit longer than that. . . . an unfortunate time delay it turned out to be . . . .

Back at my car, as I opened the door, I found many odd shards of metal, tufts

Continued on Page 3

## Your Appointed Board Members



Player Recognition  
Peggy Haugan



Membership Chairman  
June Secreto



Tournament Director  
Mary Powers



Team Captain  
June Secreto



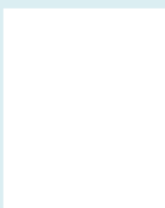
Team Co-Captain  
Ginger Dunning



Rules/ Bylaws  
Anne Tuttle



GSWPGA, TWGA  
WSPGLA Rep  
Kellie Molzhon



Social & Historical  
Cindi Banks



Handicap Chair  
Jerri Proszak



PNGA Representative  
Lynne Crandall



Webmaster  
Elana Bryan

Co -Tournament Director  
Judy Griffin

## 2010 RLGA Board

### Your Elected Officers



Captain  
Phyllis Ellermeier



CoCaptain  
Cathy Rosa



Treasurer  
Teresa Le

Secretary  
Kris Immordino

## 2010 Schedule Riverbend Ladies Golf Association

February 20	Saturday	Combined Score
March 21	Sunday	Spring Fling
April 10	Saturday	2 Person Better Ball
May 16	Sunday	Red, White & Blue
June 19	Saturday	Invitational
July 11	Sunday	Day 1 Riverbend Cup
July 17	Saturday	Day 2 Riverbend Cup
August 7 & 8	Sat & Sun	Club Championship
September 12	Sunday	Chapman
October 9	Saturday	Fast & Loose
November 7	Sunday	Big Break

**WSWPLA 2010 Schedule** Handicap Limit 40. To enter these events see entry forms in RLGA corner at Pro shop and/or contact Kellie Molzhon [kelliemolzhon@comcast.net](mailto:kelliemolzhon@comcast.net) or call 253-630-0542

Saturday	April 10	Brookdale	Tacoma
Mon-Tues	May 17,18	Three Lakes	Wenatchee
Wednesday	June 16	Shuskan	Bellingham
M-T-W	Jul 12,13,14	Gold Mountain	Gorst
Wednesday	August 18	The Home Course	Dupont
Mon-Tues	Sept 13,14	Mt Adams	Toppenish
Saturday	October 16	Willows Run	Redmond

**GSWPGA 2010 Schedule:** Handicap Limit 40. To enter these events see entry forms in RLGA corner at Pro shop and/or contact Kellie Molzhon [kelliemolzhon@comcast.net](mailto:kelliemolzhon@comcast.net) or call 253-630-0542

Thursday	8-Apr-10	Willows Run	Spring Sweeps
Thursday	13-May-10	Foster	President's Charity
Thursday	10-Jun-10	Riverbend	Pro Am
Thursday	8-Jul-10	Mount Si	Summer Sweeps & Champ. of Champs
M-T-W	Aug 9, 10, 11	Lake Wilderness	City Championship
Thursday	Sept. 9, 2010	Auburn	2 Lady Best Ball
Thursday	Oct. 14, 2010	Maplewood	Fall Sweeps
	November 11	Fairwood G&CC	Fall Luncheon

## (PNGA) Pacific Northwest Golf Association 2010 Schedule.

To enter these events go website at bottom of page or call 206-526-1238

Women's Amateur	Clarkston G & CC,	Clarkson Wa	July 12 - 16
Women's Mid Amateur	Clarkston G & CC,	Clarkson Wa	July 12 - 16
Women's Am Pub. Links	Lake Padden GC,	Bellingham, Wa	Aug 28,29
Women's Senior Team	Gold Mtn GC,	Bremerton, WA	Sept 20-22
Senior Women's Amateur	Meridian Valley CC,	Kent WA	Oct 4-5

**(WSGA) Washington State Golf Association** To enter follow WSGA link in right column or call 206-526-8605

### Winter Series

Bellevue Golf Course	Bellevue, WA	Stableford	Fri.	Jan. 22, 2010	10:00 a.m. Shotgun
Oakbrook G&CC	Lakewood, WA	2 Person Scramble	Fri.	Feb. 19, 2010	10:00 a.m. Shotgun
The Cedars at Dungeness	Sequim, WA	Individual Stroke Play	Fri.	March 26, 2010	9:00 a.m.
Apple Tree Golf Resort	Yakima, WA	Four-ball (2 person Best-Ball)	Fri.	April 9, 2010	8:30am - 12:30 p.m.

### Regular Events:

Member Club Team Championship	Suncadia Resort	Roslyn WA	June 1,2
Womens Best Ball Championship	Yakima CC	Yakima WA	May 24, 25
Women's Amateur Championship	The Cedars at Dungeness	Sequim, WA	June 22, 24
Women's Senior Amateur	The Cedars at Dungeness	Sequim, WA	June 22, 24
Women's Mid-Amateur Championship	Wine Valley GC,	Walla Walla WA	August 6, 7

Your RLGA membership gains you entry into state (WSWPLA) events, city (GSWPGA) events and in 2010 the TWGA, the Tacoma Women's Golf Association. Your RLGA membership entitles you to play in any PNGA or WSGA event. To play in USGA events you need to personally join the USGA. The websites for these organizations are below. If you are reading this on the web, you should be able to click on the URL and be taken to the website:

**State:** WSWPLA Washington State Women's Public Links Association <http://www.wswpla.com>

**City:** GSWPGA Greater Seattle Women's Public Golf Association <http://www.gswpga.com>

**TWGA** Tacoma Women's Golf Association <http://www.twga.org>

**PNGA** Pacific Northwest Golf Association <http://www.thepnga.org>

**WSGA** Washington State Golf Association <http://www.thewsga.org>

**USGA** United States Golf Association <http://www.usga.org/>

Tacoma Womens Golf Association TWGA 2010 Schedule: Handicap Limit 40. To enter these events see entry forms in RLGA corner at Pro shop and/or contact Kellie Molzhon [kelliemolzhon@comcast.net](mailto:kelliemolzhon@comcast.net) 253-630-0542  
To be announced

## Captain's Footnotes continued from page 1:

of yellow and black fuzz, along with a few missing clubs from my bag.

Completely puzzled and convinced I had been robbed, I took a glance back in my review mirror to notice my dog's lips and muzzle covered with black and yellow fuzz with a particularly long fragment of metal hanging from his teeth. I explored further only to find even more metal pieces on the rear seat where he sat, and the back and yellow fuzz source - my driver's head cover - a large fuzzy backside of a bumble bee.

I knew that beating him in the parking lot could be considered abusive and leaving him in the parking lot would also be a choice condemned by other pet owners.

I located the actual head of my driver buried under the dog's blanket. It may have only been collateral damage with the bumble bee as the dog's newest toy.

So when I hear someone say "My Dog Ate My Homework" or "My Dog ate that photograph" . . . I can be more sympathetic and far less skeptical than I may have been in the past.

"My dog ate my Driver" may not be the best excuse for not playing golf as much as I usually do in the winter, but it IS my story and I AM sticking to it. So when I welcome you to Riverbend to "See you on the Course of Course" . . . it will be with my brand new 12 degree G10 Ping driver. See you all in 2010.

Phyllis Ellermeier, Captain, 2010



P.S. the photographs accompanying this story are real and the dog's disguise in his photo is to protect his completely rotten identity.

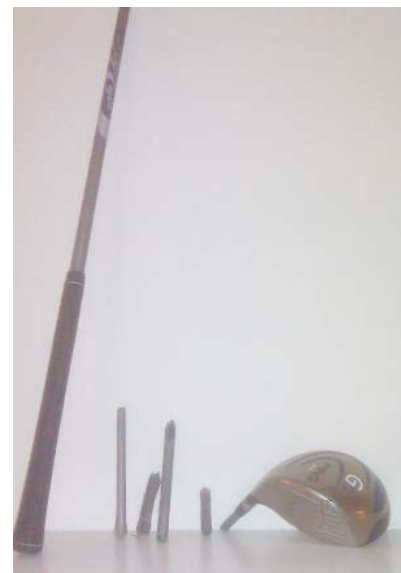
## From Your Handicap Chairman, Jerri Prozak: Most Improved Golfer of 2009

Congratulations to Carolyn McGill for being RLGA's most improved golfer for 2009. She reduced her handicap by 4.5 strokes, from 40.4 to 35.9 with 13 posted rounds. Carolyn has been a member since 2006.

This information is from our handicap chair because Ghin reports this statistic to Jerri every year and she in turn passes this on to us.

## From June Secreto, Membership Chairman from announcement at the January 5 RLGA Board Meeting.

New benefit to Riverbend mens and womens club members for 2010, we will all receive a free round on our birthday. This new benefit is in addition to the free anytime 18 hole round, in addition to the free 9 hole round, in addition to the free ten small buckets at the driving range, in addition to the 10% discount at the pro shop and 20% discount for food at the Fire Creek Grill.

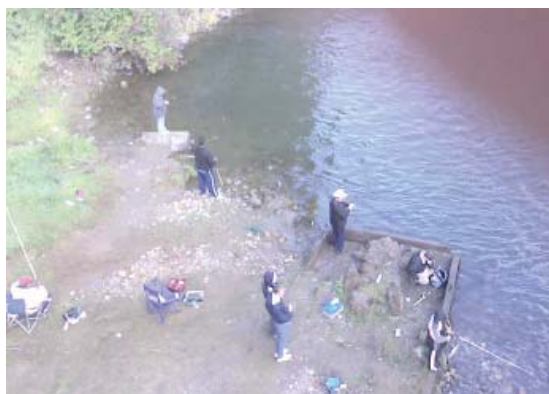




Pictured above at GSWPGA luncheon are five of the RLGA 2009 team participants. From left to right: Kathy Provazek, Angela Hobbs, June Secreto (RLGA Team Captain), Mary Powers, Kellie Molzhon and Kren Maguire the GSWPGA Team Chairman. Missing from photo are Cathy Kay, Linda Pearson, Mary Ryan, Ginger Dunning, Linda Seleque, Ok Yun Lim, VirgyLou Woods and Sheila Locke.



June Secreto, RLGA Team Captain accepts First Place Gross plaque from GSWPGA Team Captain Kren Maguire at the annual luncheon on November 14 at HD Hotspurs.



Taken from the bridge between 10 and 11 on October 3rd at the Big Break. From the bridge we were able to see schools of dozens of salmon making their way upriver.

# The FORE!

RLGA  
P O Box 1091  
Kent, WA 98035-1091

What should you do if you post the wrong score?  
E-mail Handicap chairman, Jerri Proszek and she will fix it! chandje@comcast.net

## Important Dates:

March 1, 2010! First day to post. If you are playing winter golf in a warm climate at a Ghin course, post-where-you-play or wait until March when Washington courses start to post and post all your warm weather scores at one sitting.

## Nov.- Feb. Green Fee Specials at Riverbend Golf Complex

Lunch can be added to any green fee at any time for an additional \$7.00  
Pick from the following Fire Creek Grill Menu Items:

- Chicken Burger and Fries
- Cheeseburger and Fries
- Personal 1 Topping Pizza
- Sante Fee BBQ Chicken Salad

	Monday & Tuesday	Wednesday & Thursday	Friday, Saturday & Sunday after 11:00 AM
18 Holes Walking	\$18.00	\$20.00	\$24.00
18 Cart	\$24.00	\$26.00	\$30.00
18 Cart and Lunch	\$31.00	\$33.00	\$37.00

Sheila and Shari played on Sunday, Jan 10, 2010 at the HOME Course. The course was in great shape just two days after tons of rain. Greens were fast !!

The sun came out for a while too! Plus they got paired with Brooks Whittle, the VP of the Western Golf section of the EVANS Scholars (caddy program), and Bob Houbregs, a former University of Washington basketball star (1953), NCAA Player of the year, and member of NBA HALL OF FAME (inducted 1987)! Golf's greatest moments, are sharing moments with special people !

